

MarktronicTM 3000 BenchDotTM Range



MarktronicTM Bench-Top Dot Marking Range

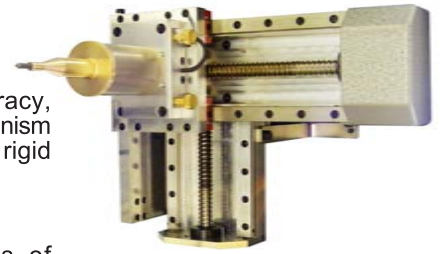
BenchDot 60-60E / BenchDot 100-100E / BenchDot 150-150E / BenchDot 300-150E
BenchDot 60-60EZA / BenchDot 100-100EZA / BenchDot 150-150EZA / BenchDot 300-150EZA
BenchDot 100-100EZAV / BenchDot 150-150EZAV / BenchDot 300-150EZAV
BenchDot 60-60DP / BenchDot 100-100DP / BenchDot 150-150DP / BenchDot 300-150DP

SPEC2000



Marktonic™ BenchDot™ Range

BenchDot™ series are robust dot marking machines designed for accuracy, speed, power and reliability. All models include a high quality ball screw mechanism with unique twin linear rails and twin linear bearings on each axis and a rigid cast column and base.



Wide range of marking windows

BenchDot™ series are available with standard marking windows of 60x60mm, 100x100mm, 150x150mm and 300x150mm.

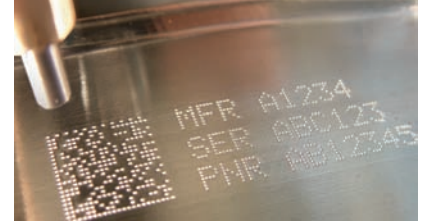
BenchDot™ E series: Electromagnetic dot marking



- ⟨ Runs on standard main current – no air supply required
- ⟨ High consistency of marking depth
- ⟨ Fully controlled number of dots per character and dot location
- ⟨ Quieter than pneumatically operated machines

Models:

60-60E 100-100E 150-150E 300-150E



Data matrix code using BenchDot™ series machine

BenchDot™ EZA series: Electromagnetic dot marking, digital Z axis with AutoSense™



- ⟨ Based on “E” series
- ⟨ Powered programmable Z digital axis (marking head height adjustment)
- ⟨ AutoSense™ system allowing self adjustment to variation of part batch height with the best precision, repeatability and consistency (especially well suited to Data Matrix marking)
- ⟨ Mark different part levels with no manual adjustment

Models:

60-60EZA 100-100EZA 150-150EZA 300-150EZA



AutoSense™ Unit

BenchDot™ EZAV series: Electromagnetic dot marking, digital Z axis, AutoSense™ and VeriSmart™



- ⟨ Based on “EZA” series
- ⟨ Integrated in-process Data Matrix verification system (VeriSmart™)
- ⟨ International standards: AS9132, JES131, AIM-DPM-Guideline, MIL-STD-130, ISO15434, ISO16022
- ⟨ 5 mega-pixel sensor allows the verification of a wide range of codes
- ⟨ Mark2Verify™ Windows® software provides simple traffic light feedback to the operator, verification results and advanced features

Models:

100-100EZAV 150-150EZAV 300-150EZAV



Traffic light feedback screen in Mark2Verify™

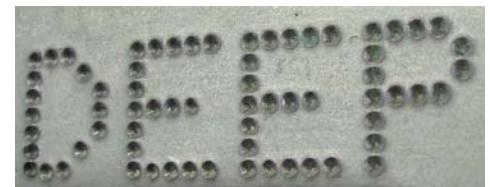
BenchDot™ DP series: Deep Pneumatic dot marking



- ⟨ Pneumatic very deep marking: up to 1.5 mm in mild steel

Models:

60-60 DP 100-100DP 150-150DP 300-150DP



Deep mark with BenchDot™ DP series machine



Mark using rotary axis and BenchDot™ series machine

Dot Marking Technology

Dot marking creates the mark by indenting a series of dots into materials to form alphanumeric characters, logos or 2D Data Matrix codes.



Marking software features

- < Multilingual user interface
- < Straight, angled, arc, & reverse marking
- < Programmable character height and width: 0.15mm to 99.9mm in increments of 0.15mm
- < Adjustable marking force (marking depth)
- < Basic range of machine fonts (5x7, 7x9, Varidot + OCR versions) on embedded systems and full range of installed True Type fonts available in MarkMaster™ PC Systems)
- < Time and Date marking in various formats
- < Variable and serial number marking
- < Data Matrix coding
- < Vector graphics & logos (.plt file format on embedded systems and .plt & .dxf on MarkMaster™ PC Software)

Applications

- < Permanently mark almost all engineering materials up to 62 HRc (cast iron, stainless steel, aluminium and titanium alloys, plastics...) etc.
- < Serial numbers, date codes, product reference, company logo, shift code, material batch...
- < Identify small to large batches of components
- < Marking on flat to uneven surfaces
- < Circumferential marking device available (see options)



3000 Controller and interface

- < No need for a PC
- < Full Qwerty membrane keyboard (possibility of external keyboard)
- < Very large and high contrast graphical screen allowing easy programming & previewing of marks
- < Up to 1350 layouts (files)
- < 2 x RS232 communication port
- < Digital I/O (8 Input, 6 Output)
- < Ethernet TCP/IP (optional)
- < Vector graphics/logo import facility (.plt/.hpgl)



3000 series controller

MarkMaster™ PC software (Optional)

Optional Windows® based software. PC connected to 3000 controller

Among extensive features:

- < Drag and drop graphical interface
- < Advanced trial run
- < Graphics tools
- < Vector graphic/logo import facility (.hpgl/.plt & .dxf)



User interface in MarkMaster™ (Advanced) software

MarkMaster™ Advanced (Optional)

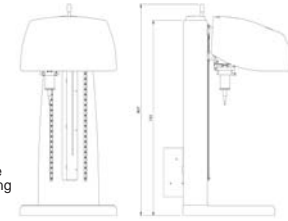
- < Supports all Windows true type fonts
- < Database connectivity for marking data queries
- < Database connectivity for duplicate data checking
- < Security Password features
- < Data logging for marking report generation



Marks Using BenchDot™ with 3000 Controller



BenchDot™ systems are extremely versatile with the ability to mark almost any shape part



Max. stylus pin to base distance is 415mm (Using 50mm stylus)

Technical Specifications

(For more technical details please see our website)
www.monode.com

- Weight:** Marking head/table/column: 34kg Controller: 10kg
- Electrical Supply:** 220v 50Hz, 110v 60Hz
- Marking Area:** 60x60mm / 100x100mm / 150x150mm / 300x150mm

Options/accessories

Stylus options:

Solid carbide stylii, with 50, 100 & 150mm lengths and tip angles of 60, 90 & 120 degrees as standard. All stylii are available with sharp tips for standard set-ups or with custom radius to minimise stress on materials and comply with IAQG standards. Other types & sizes can be made to order if required.

Circumferential (Rotary) axis:

Rotary attachment to allow marking around shafts, tubes and other circular components.

Automatic tag/plate feeder:

Electric or pneumatic fixture for automatically loading, clamping, marking and ejecting name plates and labels.

Standard Label Fixture:

Simple manually operated label fixturing.

Magnetic Bed Fixture:

Manually activated magnetic base plate, for holding ferrous items.

Data Matrix readers and verifiers:

Hand held, modular or station readers and verifiers complying with all established standards of data matrix coding

Bar-code reader:

For retrieving marking information or commands from bar-codes. Directly connected to 3000 controller on embedded systems or PC when using MarkMaster™.

Cold color foil feeder:

For high contrast colored marking on plastics & other suitable materials

T-slotted tables:

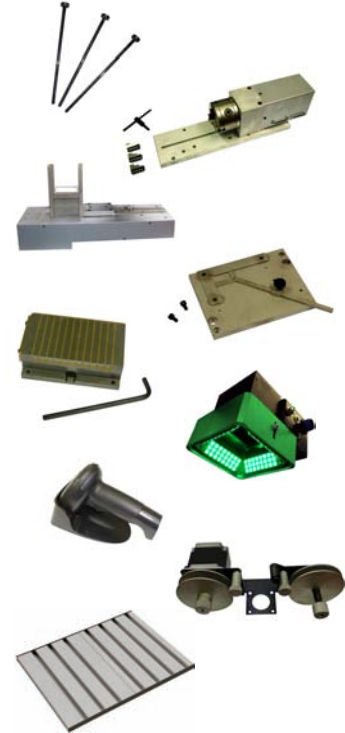
Extruded or machined aluminium T-slotted base

TCP/IP Ethernet connection:

10 BASE-T Ethernet port for connection to networks & PLC systems over long distances.

MarkMaster™ Windows® software:

MarkMaster™ Advanced Windows® software (see inside)



Pryor reserve the right to amend product specifications without notice.

Also available from Monode Marking



PortaDot™ Series



InDot™/InScribe™



Laser Series



Electro-Chemical Etch Series



Steel Stamp



When identification is critical for traceability or product impact, a quality mark is required. Monode combines creative engineering with a full range of marking solutions to meet your needs. Over a half-century of progress as a trusted "parts marking problem solver" ... that's Monode!

Contact Us:

Telephone: 440-975-8802

Fax: 440-975-1364

The Web: www.monode.com

Email: sales@monode.com

Corporate Office: 9200 Tyler Boulevard • Mentor, Ohio 44060



**Quality Marking
Equipment with
Integrated Machine
Vision Solutions**