



DataMouse™ Pro Handheld Data Matrix Reader

DataMouse™ Pro – the no compromise direct mark reader at an affordable price.

The DataMouse™ Pro is the latest in the range of Data Matrix readers from Absolute Vision. It combines the benefit of totally controllable lighting with a complete exclusion of ambient light effects to deliver exceptional reading performance on the widest range of surfaces and marking technologies.

With its ultra lightweight, impact resistant housing and tiny frontal area the DataMouse™ Pro is both ergonomic in use and able to access marks in confined spaces. The DataMouse™ Pro also offers the unique ability to display a real time image of the marks being read which is of particular benefit when using Directly Applied Marks (DAMs) for the first time. These images can easily be stored and used in reports and documentation.

The DataMouse™ Pro comes complete with its Medusa™ software interface which can transfer data automatically to any third party software application and provides scope for customising the data string format. It also allows remote control of the unit via Windows TCP/IP or RS232 communications and the transmission of Data to PLC's and other process control systems.



“A new approach to component identification using a hand-held device”

Key features:

- Portable, compact and ergonomic
- USB interface requires no external power source – ideal for portable laptop applications.
- Software controlled lighting giving excellent image quality on the widest range of mark types and surface conditions.

Powered by MEDUSA™

DataMouse™ Pro

Handheld Data Matrix Reader

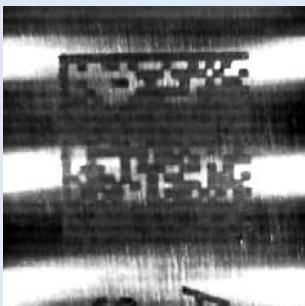
Absolute Vision Ltd

The Kennels
Packington Park
Meriden
Warwickshire
CV7 7HE
United Kingdom

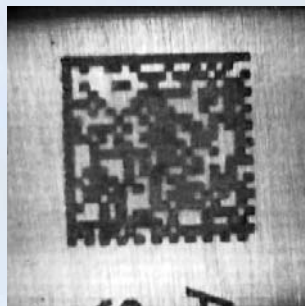
tel: 0845 130 1880
fax: 0845 130 1886
e-mail: sales@absolutevision.co.uk
www.absolutevision.co.uk

Specification Details

CODE Formats	Data Matrix, ISO 16022, Square & Rectangular Format, ECC 200, 0 – 140, White on Black and Black on White
Minimum Cell Size	From 0.12 mm
Marking Types	Printed Labels and Directly Applied Marks (DAM) Including: Dot Peen, Ink Jet, Laser, Electrochemical Etching
Surface Types	Flat or Cylindrical, Metal, Plastic, From rough to highly polished
Field of View	20 mm by 20 mm
Sensor	1/3" CCD progressive scan
Light Source	LED – Software controlled
Camera/Light Unit Size	Height 70.0mm, Diameter 70.0mm
Enclosure Type	Impact resistant polypropylene, No external ventilation
Weight	100 grams
Cable Length	1 metre
Signal Interface	USB
User Interface	Medusa™ GUI, including realtime video image, Windows TCP/IP and RS232 communications
Operating System	Windows 2000 or XP



Brushed aluminium image
with normal lighting



Brushed aluminium image
with software controlled lighting