

- STEEL TYPE
- ROLL DIES
- HAND STAMPS
- HOT STAMPS
- DIE INSERTS
- CUSTOM ENGRAVING
- E.D.M. SERVICES
- MARKING MACHINERY

# MONODE™ STEEL STAMP, INC.

149 High Street • New London, Ohio 44851  
 Phone: 419-929-3501 • Fax: 419-929-8806



## Model MSPR-35

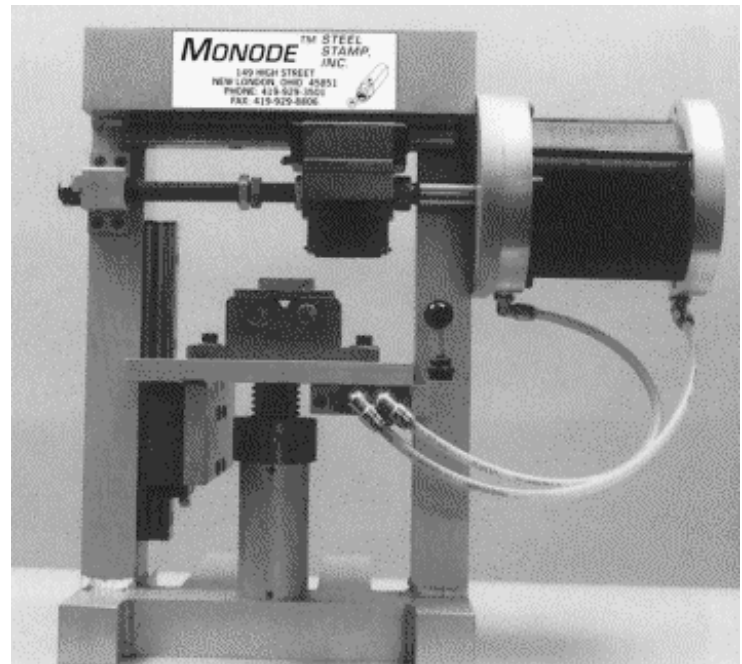
### Pneumatic Roll Marking Machine

The Monode bench top style pneumatic roll marker is not only Economical, but it is Powerful, Versatile and Dependable. Built to provide a Quality Mark day in and day out. it's a great replacement for the big, old hydraulic style roll markers of the past.

Our standard machine has a Single Cylinder which drives the Cross Slide action. The table is manually adjusted up or down by a heavy duty screw and collar. This solid design ensures a Consistent Mark.

Optional features include a Pneumatic Table Lift The one half inch lift will compensate for inconsistent part dimensions providing a more consistent mark Double palm button controls are required with this option.

This compact but Heavy Duty Marking Machine has superior strength with an Aluminum frame construction using a new technology developed in the Aircraft Industry.



## SPECIFICATIONS OF MODEL MSPR-35

WEIGHT	100 LBS.
AIR REQUIRED	100 PSI
OVERALL SIZE	22" W X 20" D X 23" H
THROAT OPENING (FROM TABLE TO CROSS SLIDE)	9 INCHES
ROUND PARTS	1/8 TO 7-1/2 INCH DIAMETER
FLAT PARTS	UP TO 6 INCHES THICK
TABLE TOP	10 X 12 INCHES
CAPACITY	4 TON RATING *
LENGTH OF MARK	ADJUSTABLE UP TO 5"

\* Up to 4 lines of 1/8" characters in mild steel

### FEATURES:

PNEUMATIC

LOW COST

DEPENDABLE

VERSATILE

COMPACT

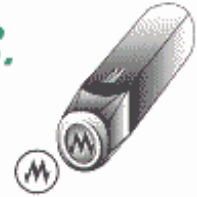
LOW MAINTENANCE

DUAL DIRECTION MARKING • STAMPS, HOLDERS & FIXTURES AVAILABLE

- STEEL TYPE
- ROLL DIES
- HAND STAMPS
- HOT STAMPS
- DIE INSERTS
- CUSTOM ENGRAVING
- E.D.M. SERVICES
- MARKING MACHINERY

# MONODE™ STEEL STAMP, INC.

149 High Street • New London, Ohio 44851  
 Phone: 419-929-3501 • Fax: 419-929-8806



## Roll Marking Equipment & Tooling

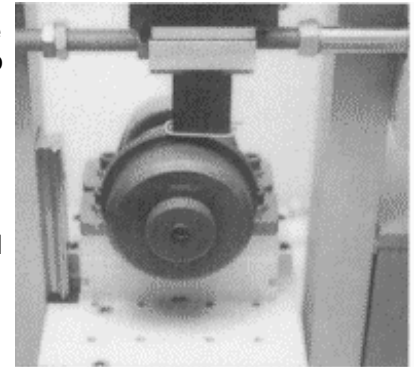


**MSPR-35**  
 WITH OPTIONAL TABLE LIFT

Monode specializes in turn key marking systems. The photos left and right illustrate a roll marking application with the product supported by a mandrel fixture. This supports the part during the marking process and provides internal support to limit distortion under the marking load.

A solid engraved stamp or a type holder with interchangeable steel type may be used.

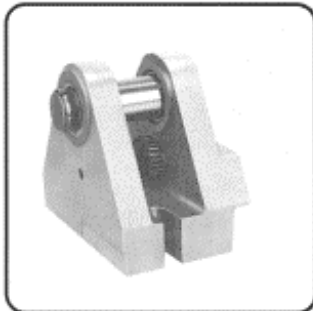
This compact machine offers the versatility to roll mark both flats or rounds. Its low price makes it an ideal choice for marking in a cell manufacturing environment.



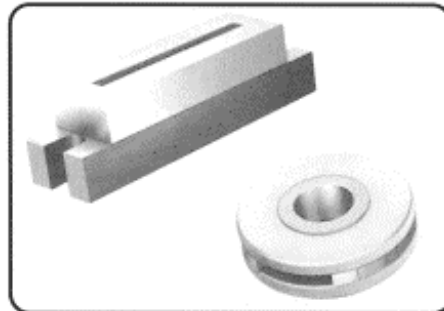
### OPTIONS:

Dual Palm Controls  
 Foot Pedal Controls  
 Fixtures, Tooling Stamps and Holders

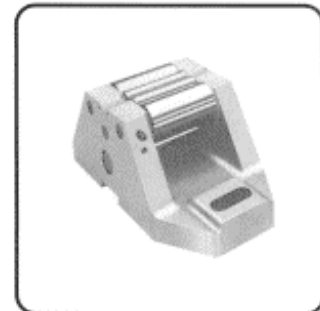
Heavy Duty Base Table  
 Bottom Air Cylinder for Table Lift  
 Air Filter Gauge & Regulator



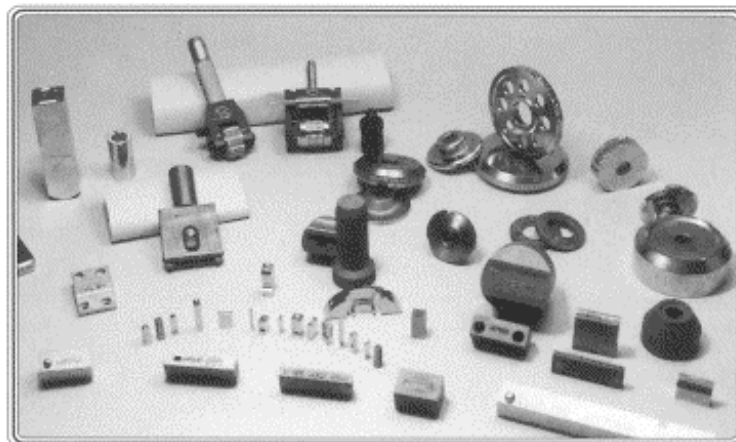
ROLLER CARRIAGE



TYPE HOLDERS



ROLLER CRADLE



ROLL MARKING STAMPS

SERVICE . . . INNOVATION . . . QUALITY . . . REFLECTED BY A GOOD IMPRESSION