

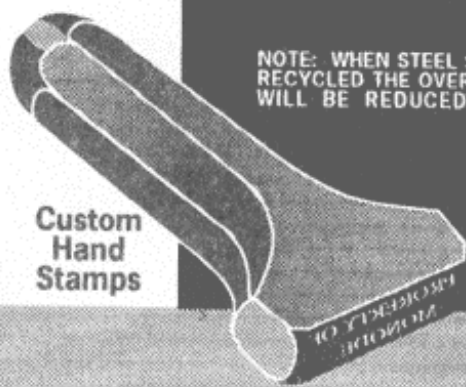
- STEEL TYPE
- ROLL DIES
- HAND STAMPS
- HOT STAMPS
- DIE INSERTS
- CUSTOM ENGRAVING
- E.D.M. SERVICES
- MARKING MACHINERY

MONODE™ STEEL STAMP, INC.

149 High Street • New London, Ohio 44851
 Phone: 419-929-3501 • Fax: 419-929-8806

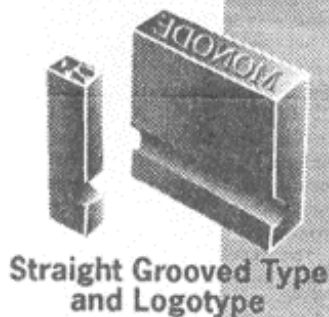


Recycle Marking Stamps



Custom
 Hand
 Stamps

NOTE: WHEN STEEL STAMPS ARE RECYCLED THE OVERALL HEIGHT WILL BE REDUCED SLIGHTLY.



Straight Grooved Type
 and Logotype

Monode Steel Stamp
 recycles old stamps into new.

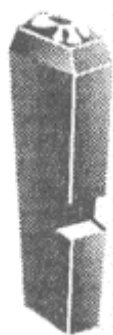
Recycling helps our environment and
saves you money at the same time
 Send us your used stamps. We will
 recycle them into new at *20% savings!*



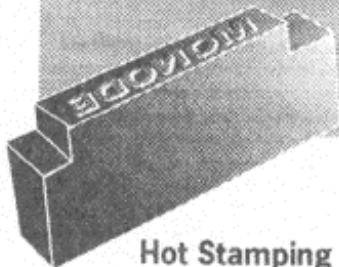
Round Bodied
 Stamps

For new stamps, call us for a fast
 competitive quote.

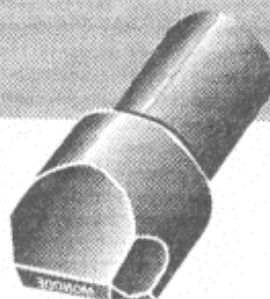
We also sell standard and custom built
 marking equipment.
 Call us with your needs.



Knurl Step Type



Hot Stamping Die



Shank Style Stamp



Graduating Dies