



VeriSmart™ Data Matrix Verifier

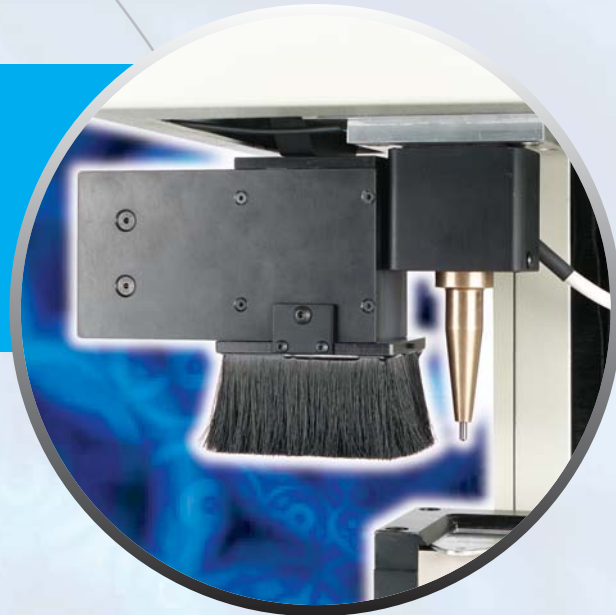


VeriSmart™ provides the hardware and software needed to verify data matrix codes to International Standards.

VeriSmart™ complements the range of Data Matrix readers from Absolute Vision. It consists of the advanced lighting and imaging hardware necessary to achieve precise digital images of codes with state of the art analysis software to measure and grade marks to the appropriate international standards.

The VeriSmart™ imaging head is of a uniquely compact and lightweight design that makes it ideal not only for desktop applications but it is also suitable for integration directly into most types of marking machines. In this way the marking and quality inspection become a single operation greatly reducing cycle times and therefore costs. This is further enhanced by a very simple 'traffic light' status display to make any Operator immediately aware of whether the mark is of an 'Excellent', 'Acceptable' or 'Unacceptable' quality grade.

VeriSmart™ also offers the ability to display real time images of the marks being verified and these images can easily be digitised, stored and used in reports and support documentation.



“A complete package to ensure mark compliance with international quality standards”

Key features:

- Compact imaging head for integration directly into most types of marking machines.
- Precision lighting and exclusion of ambient light ensures consistent results.
- Measures marks applied directly to a wide range of materials and surface finishes.

VeriSmart™

Data Matrix Verifier

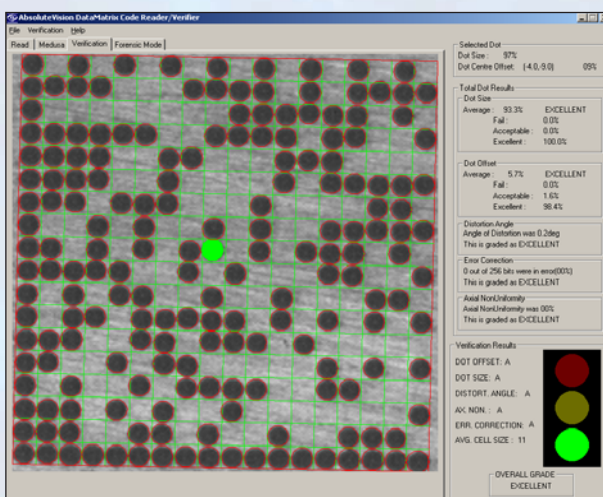
Absolute Vision Ltd

The Kennels
Packington Park
Meriden
Warwickshire
CV7 7HE
United Kingdom

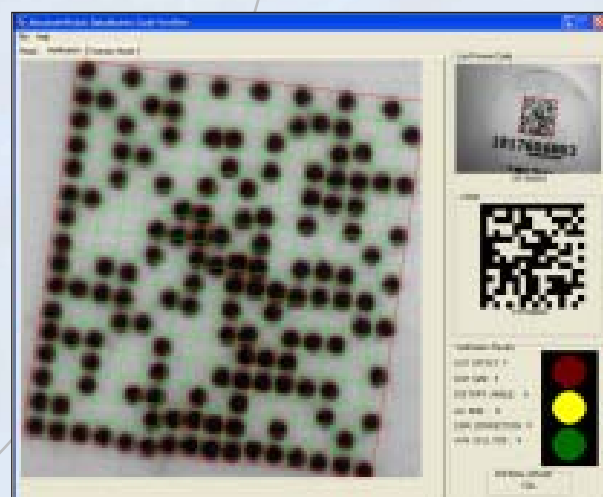
tel: 0845 130 1880
fax: 0845 130 1886
e-mail: sales@absolutevision.co.uk
www.absolutevision.co.uk

Specification Details

CODE Formats	Data Matrix, ISO 16022, Square and Rectangular Format, ECC 200, 0 – 140 White on Black and Black on White
Minimum Cell Size	Preset to order
Marking Types	Printed Labels and Directly Applied Marks (DAM) Including: Dot Peen, Ink Jet, Laser, Electrochemical Etching
Surface Types	Metal, Plastic, Paper. From rough to highly polished
Field of View	Preset to order
Sensor	1/3" progressive scan
Light Source	Solid State LED precision source
Camera/Light Unit Size	Length 135.0 mm, Depth 125.0 mm, Width 65.0 mm
Enclosure Type	Aluminium alloy, No external ventilation
Weight	600 grams
Cable Length	1 metre other lengths available
Signal Interface	IEEE - 1394
User Interface	VeriSmart™ GUI, including real time video image
Operating System	Windows© 2000 or XP



VeriSmart™ full screen display including measurement results and grades



Display showing poor mark quality