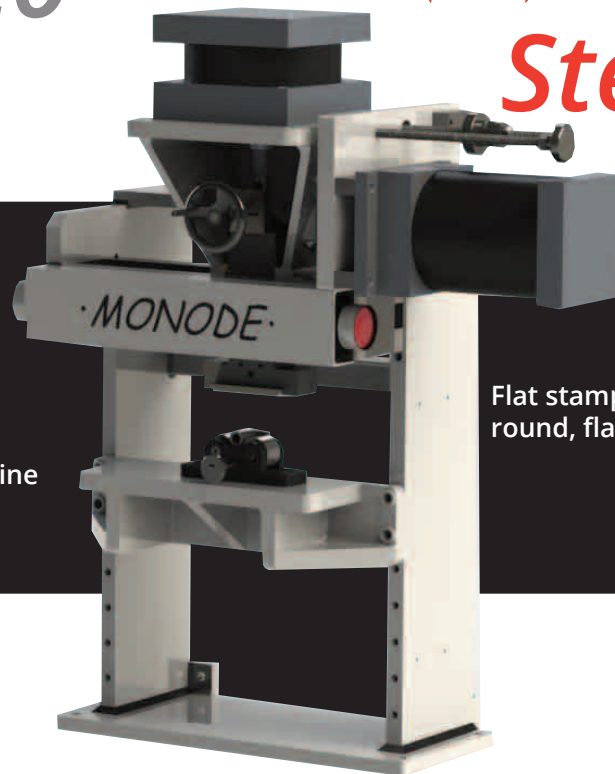


PR-320

Monode™ Steel Stamp



The PR-320 adds versatility and efficiency to marking operations. It can be operate in any position to fit specific applications, such as marking componinet on transfer type machines. Accepts existing roll marking machine tools, or can be equipped with Imperial's standard line of fixtures.

Flat stamps or marking rolls are used to mark round, flat or contoured surfaces.

Operation:

The marking head automatically moves down against the piece part, applies controlled pressure, and rolls from right to left across the work, producing the highest quality impressions. With large die space and a hand wheel for fine depth adjustments when required, a variety of sizes can be marked.



Construction:

Unique, rugged design provides advantages normally associated only with large, more expensive machines. "H" frame construction, with open back, makes it easy to accommodate longer parts. Sturdy, completely enclosed base reduces space requirements. Hand controls are within easy reach of the operator. Unit is pneumatically operated with horizontal and vertical cylinders in the marking head. (Once part is located, it remains in a fixed position).

Specifications

Maximum pressure at 100 lbs.	
PR-320-2	5200lbs.
PR-320-4	8000lbs.
right to left	1/4" to 6"
Stroke - variable up to max. of 4,800	
- 1" strokes per hour	
Vertical distance between head and table	max. 16"
Distance between uprights	17-3/4"
Maximum diameter of round piece part to be marked	14"
Maximum size of flat piece part to be marked	12"
Table Size	6" x 15"
Weight Machine	640 lbs.
Base	230 lbs.
Total	870 lbs.
Power system is completely pneumatic (no motors) (max. 8.3 CFM). No electrical connections required, unless used with production feeds.	

Roller Knurl Carriages

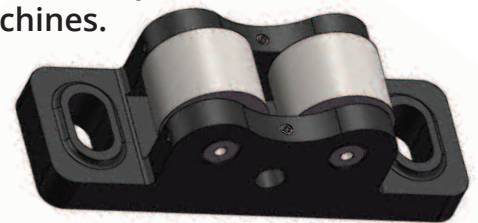
Imperial roll carriages are made in standard sizes for use on all makes of pneumatic, hydraulic and mechanical roll marking machines. Special carriages can be furnished in almost any size to accommodate any solid type roll or interchangeable holder.

Carriage Specifications			
Model No.	Maximum Roll Dia.	Shaft Diameter	Roll Width
RC 336	3"	3/4"	3/4"
RC 338	4"	3/4"	3/4"
RC 348	4"	1"	3/4"
RC 438	4"	3/4"	1"
RC 548	4"	1"	1-1/4"
RC 638	4"	3/4"	1-1/2"
RC 648	4"	1"	1-1/2"
RC 848	4"	1"	2"
RC 1058	4"	1-1/4"	2-1/2"
RC 1158	4"	1-1/4"	2-3/4"

Cradle Specifications	
Cradle No.	Range
1412	1/4" to 1/2" diameter parts
38118	3/8" to 1-1/8" diameter parts
583	5/8" to 3" diameter parts

Roller Bearing Cradle

Roll parts are held in these roller bearing tools to rotate on their own axis during the marking operation on hydraulic, pneumatic or mechanical machines.



Model PR-320 With Feed

Built for a major fuse manufacturer, this Model PR-320-H roll marking machine comes complete with a centrifugal feed system, infeed track, rotary table and locating device to rollmark trademark and size information around the periphery of fuse caps. A storage hopper is provided to assure a steady stream of product to the unit. Production rate is over 2100 parts per hour.

Cylinder Marking Equipment

Imperial engineering has designed a number of special fixtures to accommodate a wide variety of marking applications. These units have fully adjustable tooling to accommodate a range of gas cylinders ranging from 3-1/2" to 6" diameter, and up to 14 inches long. Lettering tooling consists of easily interchangeable typeholders or numbering heads depending on the operation required.

Model PR-320 Angle Mount

Marking thin wall sockets with rotating fixture. Each station has roller cradle to reduce necessary marking pressure and prevent the part from collapsing.

Horizontal Model PR-320

A unique feature of the PR-320 is its ability to be mounted in virtually any attitude to solve your marking problem. In this case the customer was marking brake pads up to 16" diameter by 2" thick. What might normally prove to be a concern in fixtures is avoided when the machine is mounted on its back so parts can be laid on their side and easily marked using a straight type holder and adjustable roller bearing cradle fixture.