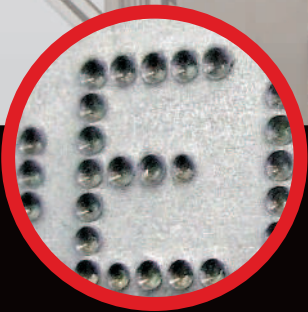
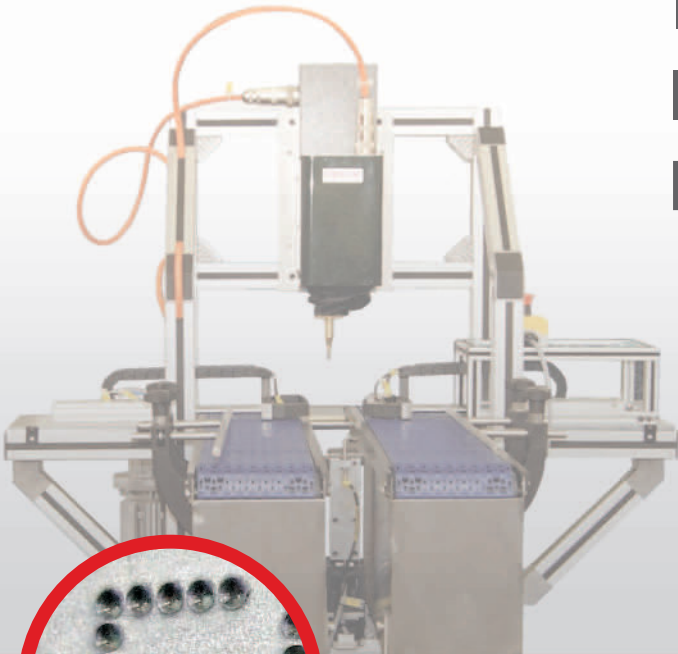


Compact
Robust
Reliable
Fast
Easy to Install



InDot™

Integrated Dot Peen Marking Series



About Dot Peen Marking

Series of dots are indented into materials to form alphanumeric characters, logos or 2D Data Matrix codes. Permanently mark almost all engineering materials up to 62 HRc.

InDot™ Series: InDot 50-25

Features:

- Extremely compact: 92mm x 130mm (3.6" x 5.1") footprint
- Excellent marking area/foot print ratio
- 25% larger marking area than most compact machines
- No pivoting axis flat X/Y movement:
 - Consistent marking depth throughout marking area
 - Drop in replacement for competitive models

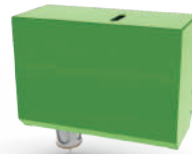


InDot™ E Series: Electromagnetic Series

- Electromagnetic - No air supply required
- Preferable method of marking Data Matrix
- Precision and consistency of individual dots
- **NEW:** Increased marking depth and amplitude

Marking Areas Available:

50mm x 25mm (2" x 1") • 60mm x 60mm (2.4" x 2.4") • 130mm x 30mm (5.1" x 1.2")
 150mm x 150mm (6" x 6") • 300mm x 150mm (12" x 6")



InDot™ FP Series: Fast Pneumatic Series

- Unbeaten Speed
- High Dot Density (HDD)

Marking Areas Available:

50mm x 25mm (2" x 1")



InDot™ DP Series: Deep Pneumatic Series

- Very Deep Marking
- Up to 0.9mm indentation in steel

Marking Areas Available:

60mm x 60mm (2.4" x 2.4")
 150mm x 150mm (6" x 6")
 300mm x 150mm (12" x 6")



TECHNICAL SPECIFICATIONS

For more technical details, please visit our website at www.monode.com

| | | | Version Available: | | |
|------------------------|--------------------------|----------------------------|--------------------|---|----|
| Common Technical Info: | | Marking Area: (mm/in) | FP | E | DP |
| Electrical Supply | 120-230V / 200VA | InDot 50-25 (2" x 1") | • | • | |
| Frequency | 50-60Hz | InDot 130-30 (5.1" x 1.2") | | • | |
| Air Supply(DP&FP) | 6bars (87psi) | InDot 60-60 (2.4" x 2.4") | | • | • |
| | Non-lubricated Dry Air | InDot 150-150 (6" x 6") | | • | • |
| Head Cable | 3m (9.8ft) Robotic Cable | InDot 300-150 (12" x 6") | | • | • |



*Twin Linear Guide Rails and bearing**

InDot: Compact • Robust • Reliable • Fast • Easy to Install

4000 Controller Version

PC not required
10.4" touchscreen
New software features
Password protection

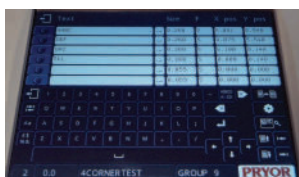


Marking Features:

Fixed texts, variables, serial numbers, arc and angular, time/date, Data Matrix, logos, backward & forward marking, etc.

Standard Communication:

PC/PLC/barcode reader/printer connection, text reception, uploads & downloads, select file, automation control, RS232,



Available Options:

- I/O extended to 16I/12O
- TCP/IP Ethernet
- Profibus
- DeviceNet
- Modbus
- Profinet
- EtherCAT

USB Controller Version



Marking head permanently connected to a PC with Traceable IT software.

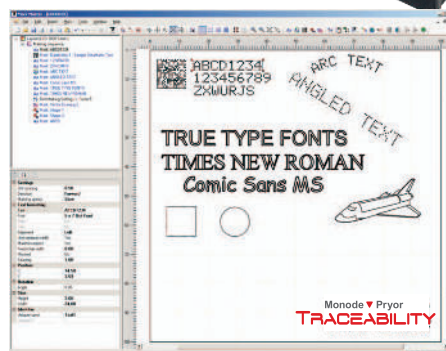
Drag, drop, scale, rotate graphical interface. Align, group marking blocks, show marking path.

Variables, serial numbers, time/date, Data Matrix, logo (.hpg/.plt&.dxf)

Query & write back to Excel, Access, SQL Server, My SQL etc, duplicate data checking and log data (history)*

Supports all Windows© True Type Fonts*, including Chinese, Japanese, Korean (...) characters.

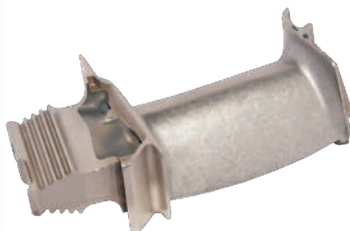
**Requires Traceable ITTM Advanced software*



Applications:



Automotive marking



Aerospace marking



Key marking



Production Line

Optional Extras:



Electric/Pneumatic
Z-Axis



90° Connector



Various Stylii



Base & Column



Barcode Scanner



Data Matrix
Readers



I/O Extension



TCP/IP Module



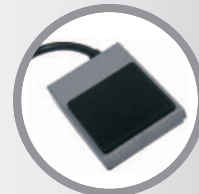
6m & 10m Head Cable



Plastic Color Mark



Start/Stop Box



Foot Pedal

Alternative Dot Peen Machines:



Portable Machines



Bench Top



Custom Systems

Other Technologies:



Scribe Marking



Laser Marking



Electro-Chemical
Etching



Manual & Press
Marking



Traceability
Products



When identification is critical for traceability or product impact, a quality mark is required. Monode combines creative engineering with a full range of marking solutions to meet your needs. Over a half-century of progress as a trusted "parts marking problem solver" ...that's Monode!



Quality Marking Equipment with
Integrated Machine Vision Solutions